

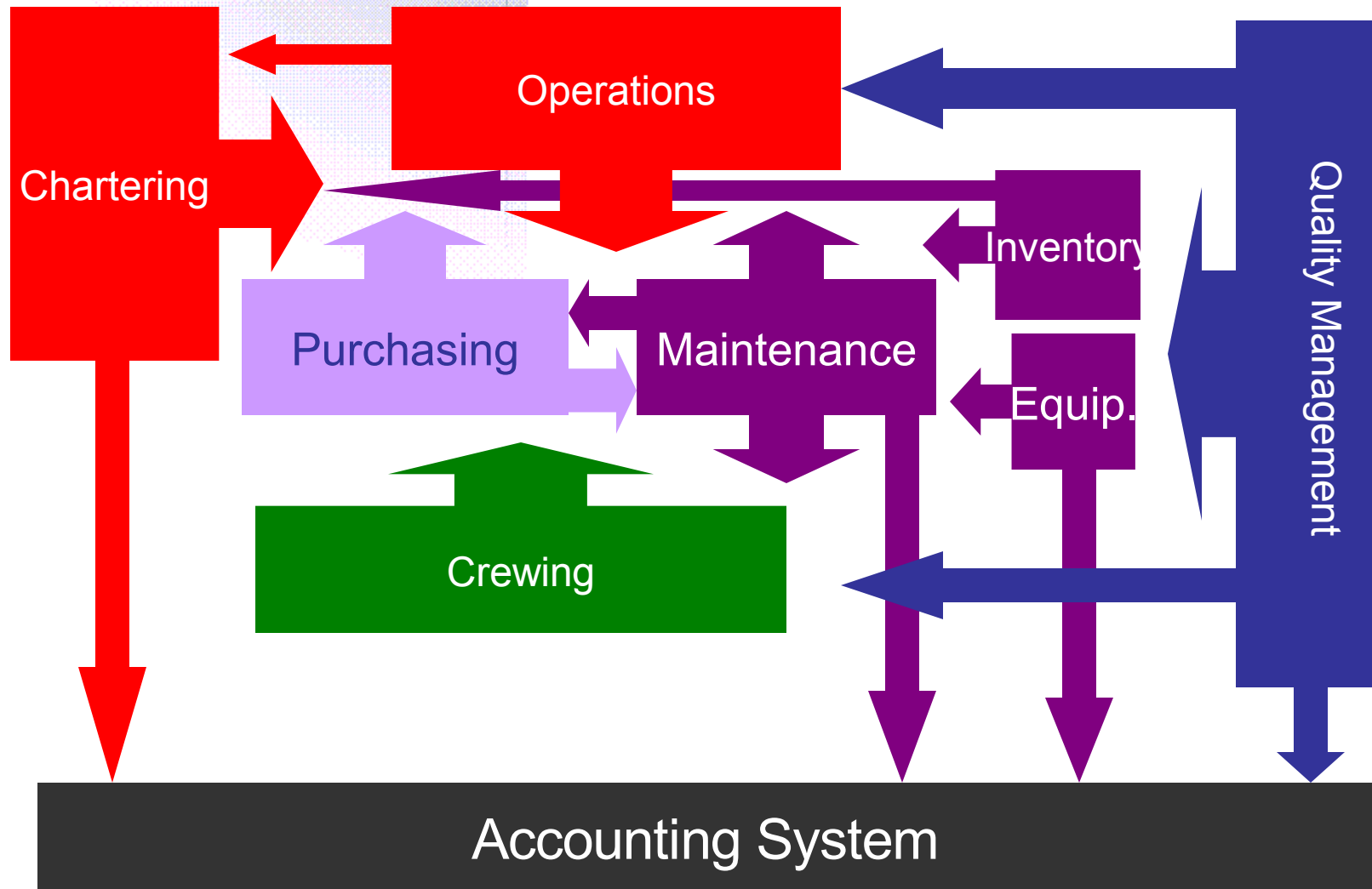
Implementation of Ship Management Systems Project Management

**Prepared by Lana Al-Salem
Director of Projects Management
SpecTec Ltd.**

Agenda

- Ship Management Systems
- Implementation Success factors
- Project management (PM)
 - Implementation Phases
 - Deliverables
- Future

ShipManagement Systems: An Integrated Solution



How Does Ship Management Systems Create Value?

- Ship Management systems link together entire organization's operations such as crewing, chartering, planned maintenance, and purchasing, with shared data & visibility across the business.
- Ship Management systems connect the organization to its vessels, owners and suppliers.
- Ship Management systems employ use of “Best Practices”
- Ship Management systems provide real time information

Implementing ShipManagement Systems

- Implementation is a critical activity for many shipping companies.
- Many unsuccessful implementation projects
 - unutilized systems (offshelf)
 - leaving companies with delivery problems
 - frustrated employees
 - unjustified expenses and cost (no ROI)
 - unsatisfied management



Critical Success Factors For Implementation

- Top management support
- Project champion
- Dedicate & committed team
- Software house/customer partnerships
- Project management
- Use of consultants
- Data analysis and conversion
- Business process reengineering
- Change Management
- Training

PM for Implementation

- PM is a process that spans the full cycle of a project, from inception to completion.
 - Planning, executions, and control of all resources, tasks, activities, necessary to complete the project.



Project Management

Project Charter

Signoff criteria

Project Phases

Project Plan

Risk Management

Resources

Who's responsible for implementation?

Implementation Team (Leaders/Members):

- ShipManagement System Provider:
 - Project Manager
 - Consultants
 - Programmers
- Shipping Company:
 - Project Champion/Manager (IS Department)
 - Module/Business leaders (subject area experts)
 - Individual team members

Project Phases For Implementation

Define Project

Blueprint Business Processes

Configure the System

Test

Train

Go Live

Phases Walkthrough

Project Definition

Definition of the projects scope

Business Process

Elicitation of the ShipManagement's business processes.

System Configuration

Configuration of the system to meet the ShipManagement's needs.

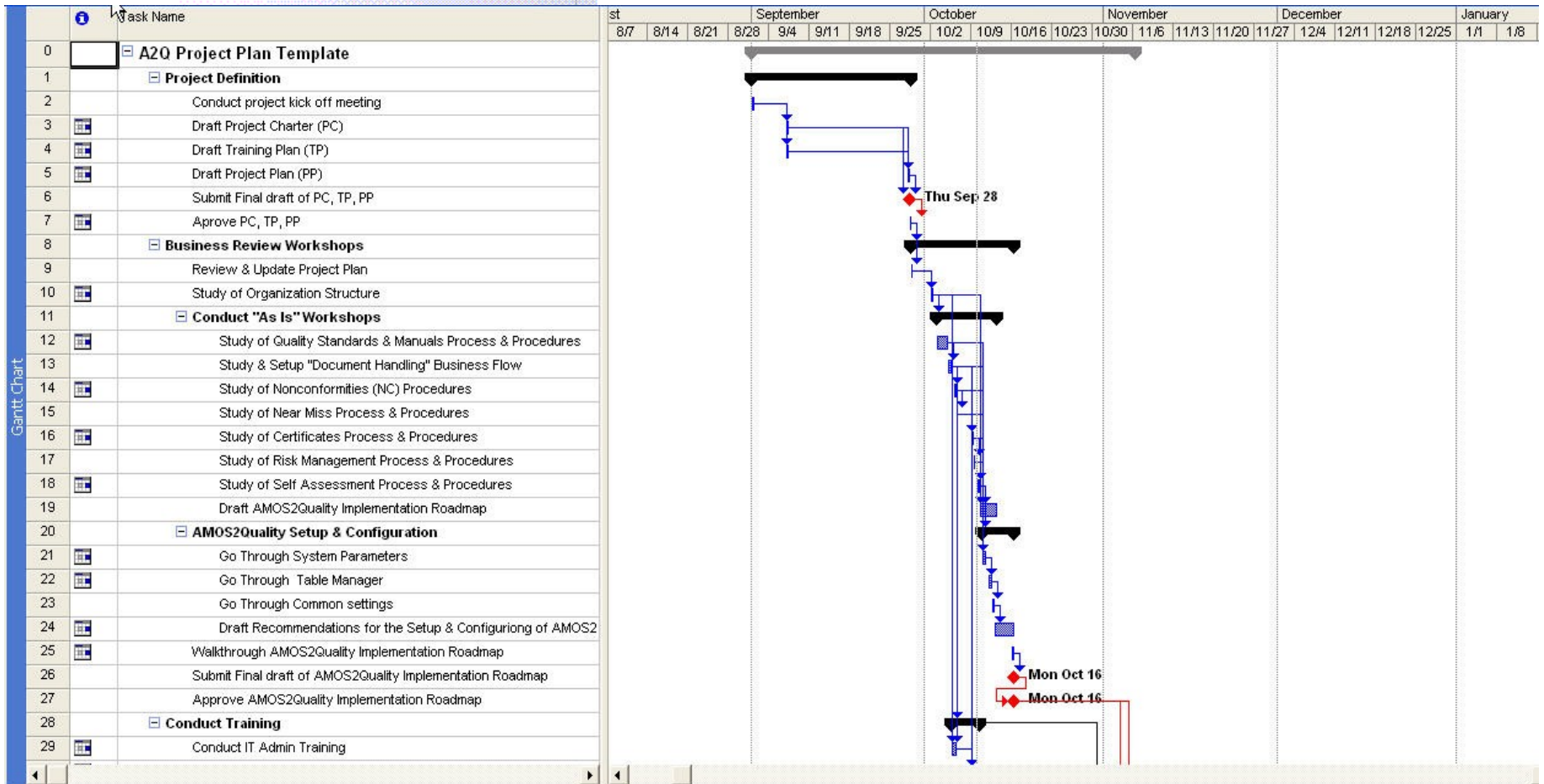
Testing

Validate the configured solution

Training

Build in-house knowledge on the ShipManagement system

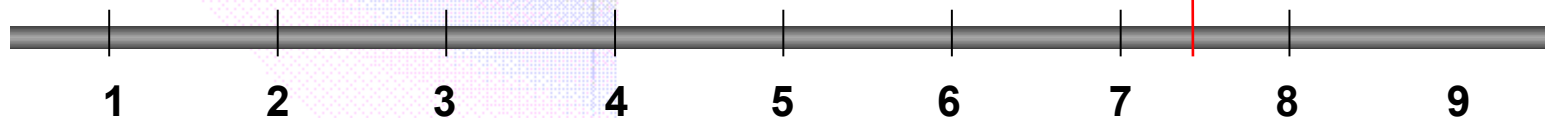
Sample Plan



Deliverables

Months

Go-live



Project Definition

Blueprint Business Process

System Configuration

Testing

Training

Project Plan

Project Charter

Training Plan

Communication Plan

Business Process Model

"As Is" Documentation

Training Material

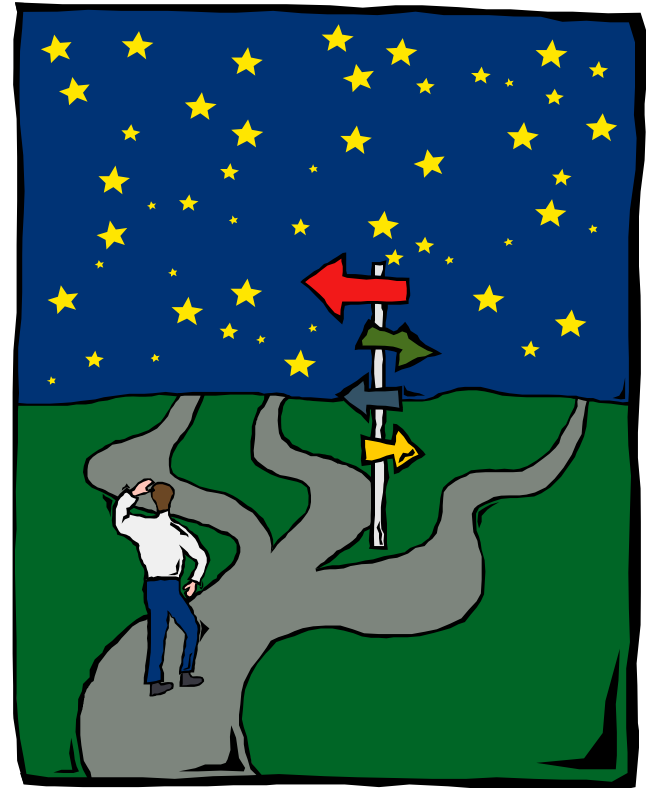
Setting up Business Workflow

Populating initial data

Configuring Security

Go Live

- Go live entire business at once.
- Implement one business unit at a time and make sure its right.
- Implement one business unit until its right and then implement the rest all at once.



More Recommendations

- Define clear objectives
- Users - from start to end!
- Evaluate business process
- Don't go live till you're ready
- Define signoff criteria

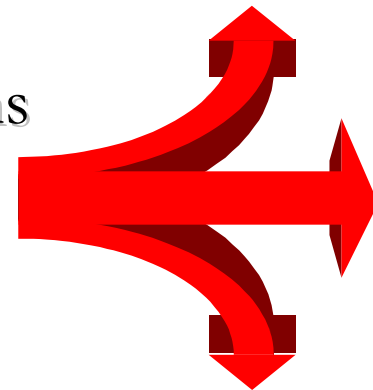
The Big IF

IF you have...

- A Good ShipManagement system
- Commitment of Management and Team
- Solid implementation methodology and plan...then ShipManagement system will *pay off big* for your organization.

The Future

- Successful/Failed Implementation!
- Satisfaction/frustration in the industry!
- Trust/ Doubt of ShipManagement Systems role in helping shipping companies in:
 - Improving business process
 - Reducing workload
 - Complying with continuous regulations
 - Reducing cost



Thank You for Listening. Questions?

