

Fleet Broadband Hardware

Marine Satellite Solution you depend on

Digitalship Cyprus 2008

JRC Europe

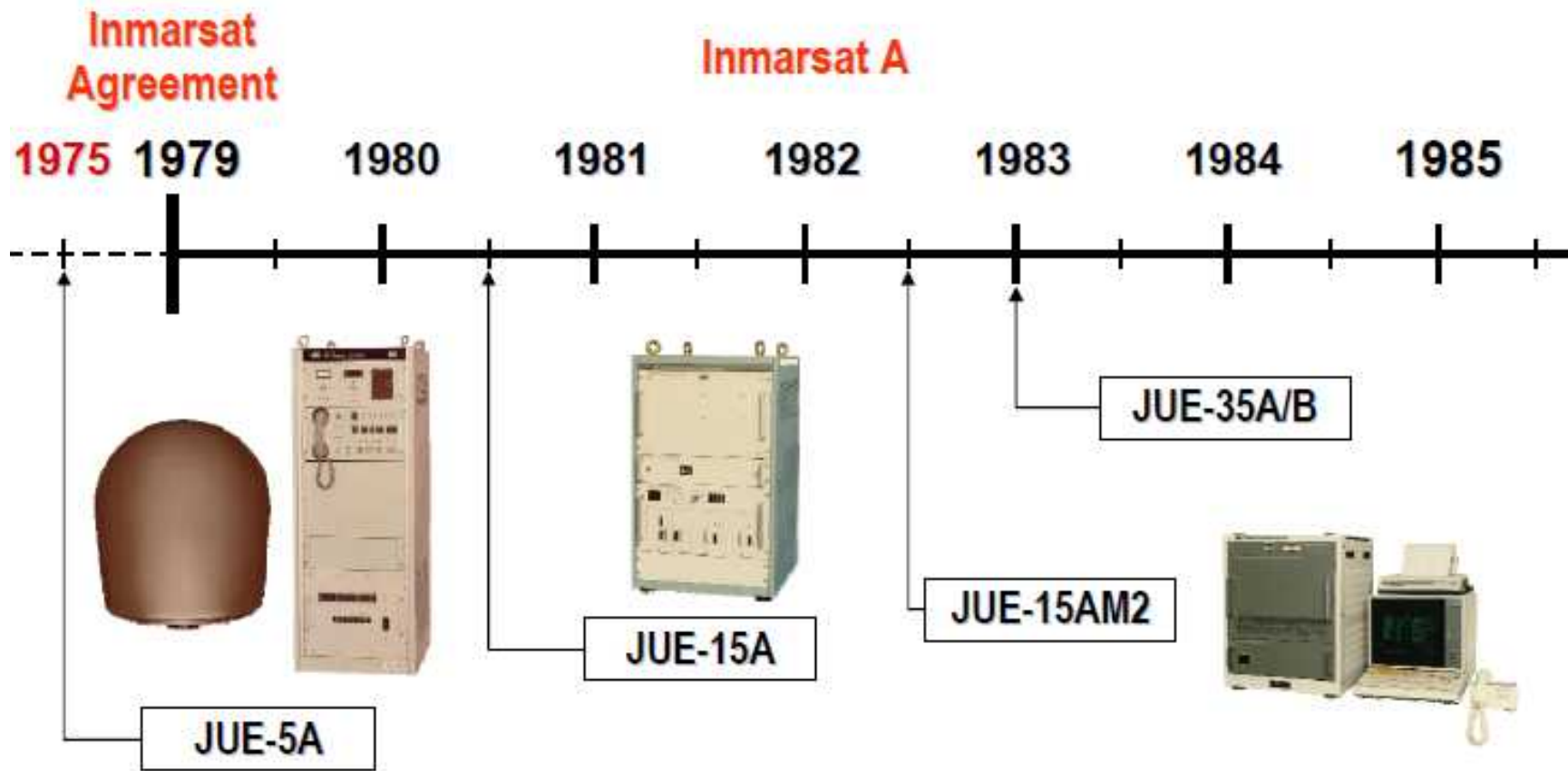
Harry Miyashita

Contents



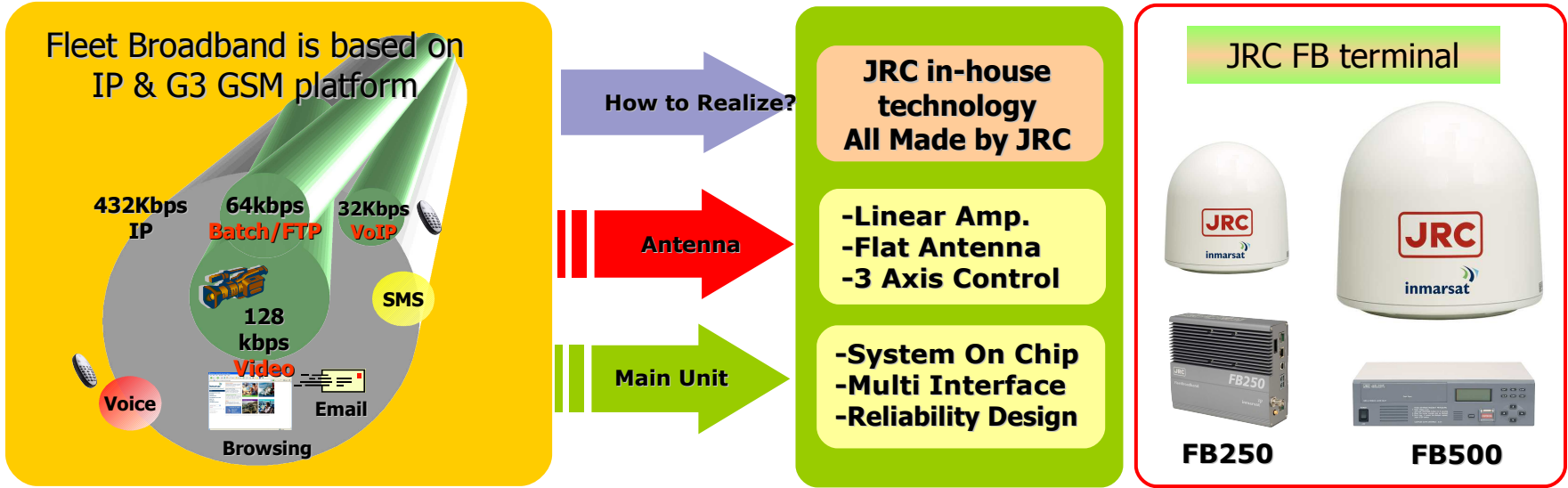
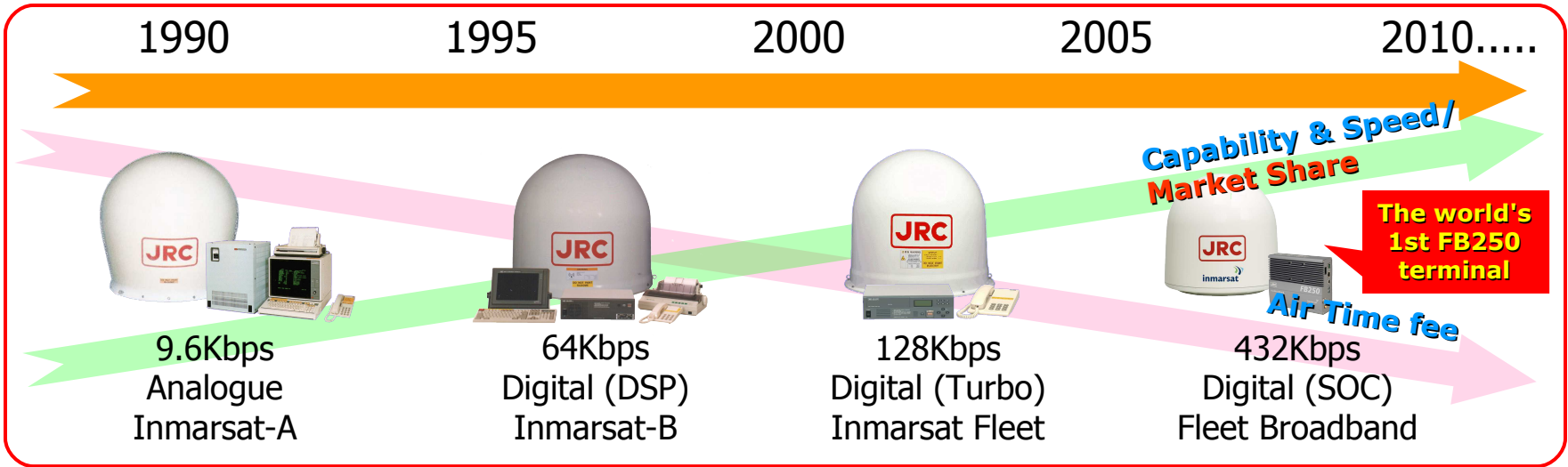
- History of JRC Inmarsat products
- Introduction of Broadband family
- FBB Hardware
- Road Map of FBB products
- Unique feature Upgrade path™
- Global Support

Since 1978



The world first Inmarsat terminal

Next Generation Satellite Communication



JRC Fleet Broadband Family

JRC

FB250

ADE



BDE



Handset

JUE-250

FB500

ADE



BDE



Handset

JUE-500

Upto 11 Simultaneous Connections *

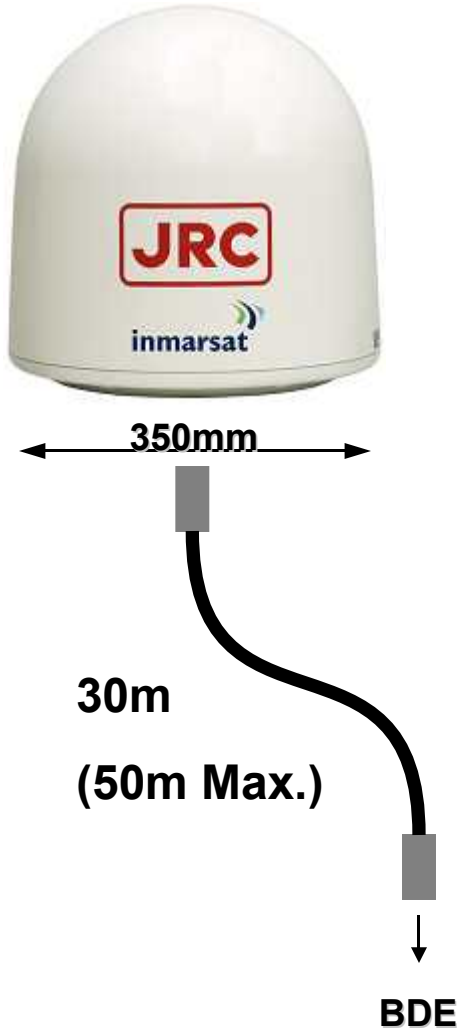
JRC

Connection 1	Connection 2	Allowed/Possible
4Kbps Voice	Standard IP (be)	Yes
3.1K Voice	Standard IP (be)	Yes
4Kbps Voice	Streaming IP (Except 256 kbps)	Yes
Standard IP	Streaming IP	Yes
ISDN	Standard IP (be)	Yes
3.1K Voice (via ISDN)	Streaming IP	No
ISDN	Streaming IP	No

* Depends upon manufacturer and firmware versions

JUE-250 Above Deck Equipment

JRC

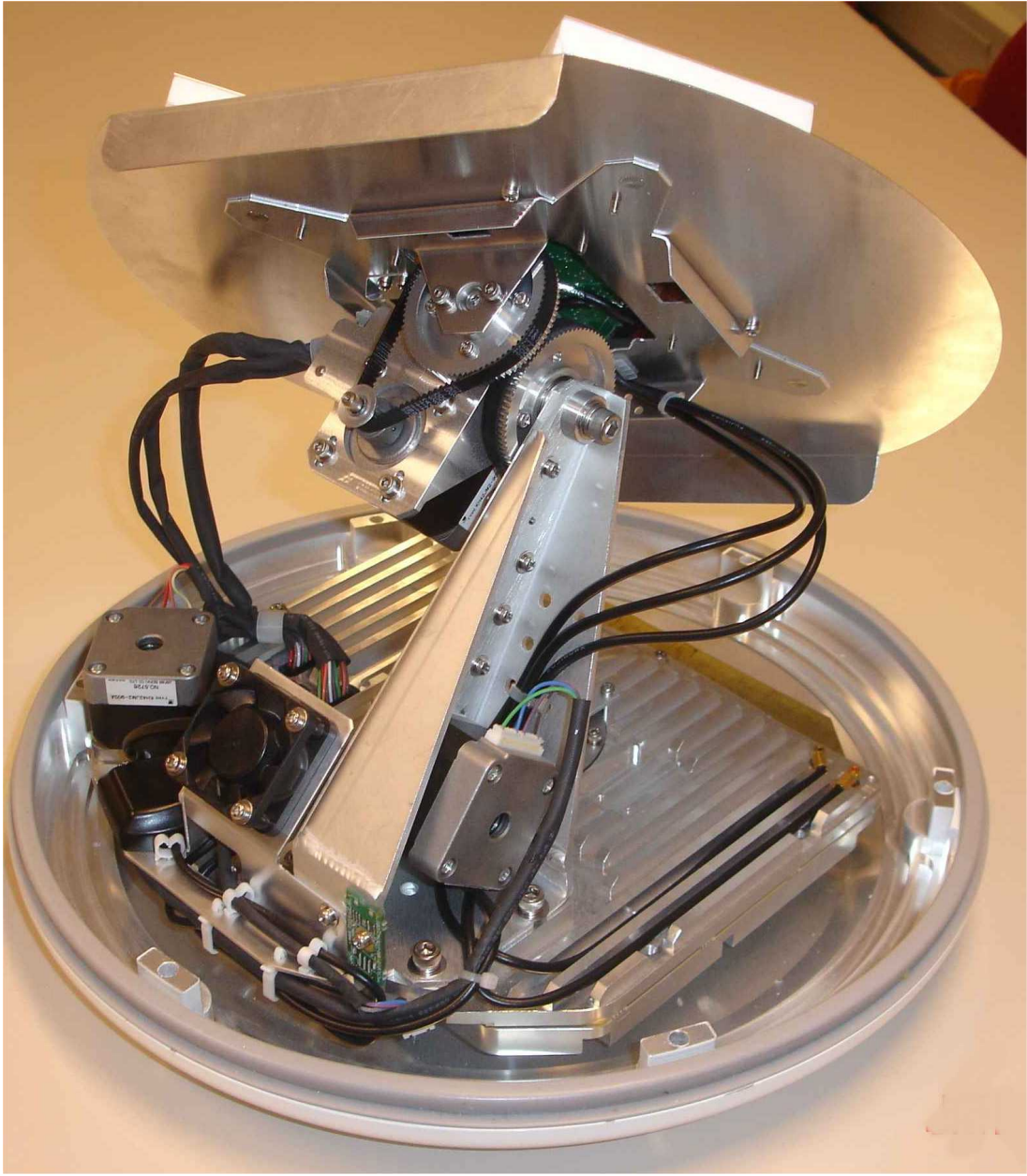


- High reliable, In-house electrical & mechanical design

Size: H x D = 350mm x 350mm

approx. 4.7 KG

- Single coaxial cable
- Same cable as Fleet F33



Hardware Antenna

***State of Art
Design***

JRC

***Hardware
Antenna***

***Reliability
is Here***

Hardware Antenna

JRC

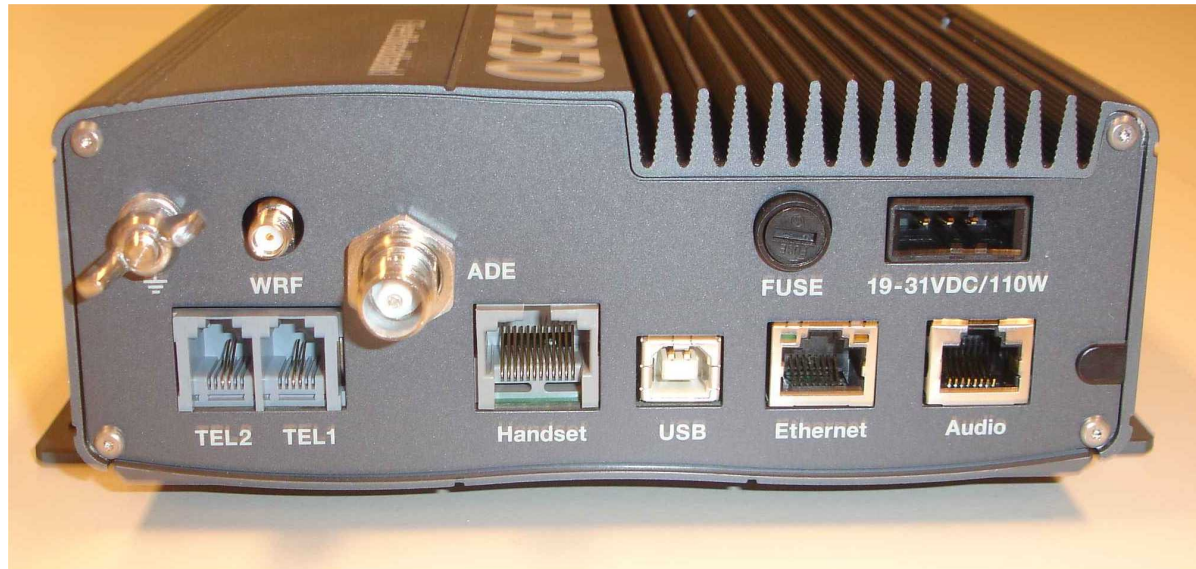


**Dome base made by
carving Aluminum**

JAN 26 2008



FB3



FB250

JUE-250 Below Deck Equipment

JRC



- Multi communication hub
- Built-in Web server
- Various interfaces

Size: H x W x D =

166mm x 221mm x 64mm

approx. 4 KG

1 x SIM Card

1 x DC Power Input

1 x Dedicated handset

WRF splitter



1 x RJ-45 3.1K Audio

1 x RJ-45 LAN [Data]

1 x USB [Data]

1 x RJ-11 2-wire [Voice]

1 x RJ-11 2-wire [Fax]



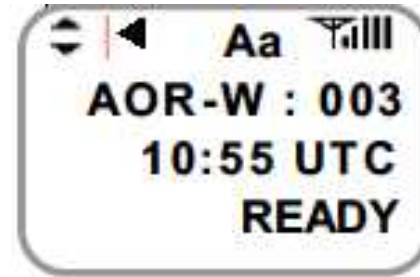
Three Operation Screens



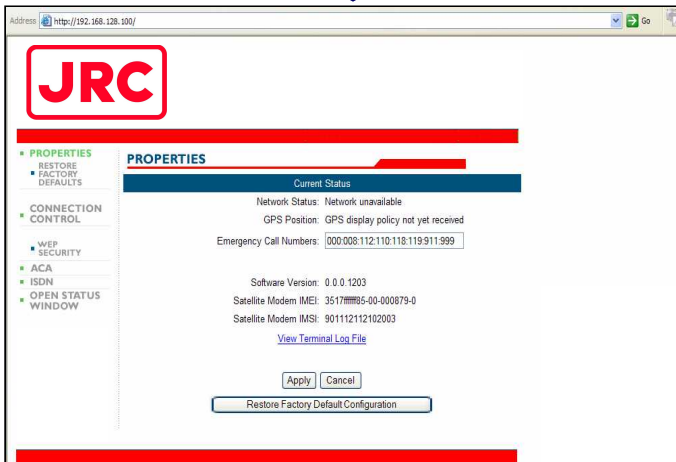
Voice call , ID setting

Data Call, SMS

IP setting, Factory setting



Handset Screen



JRC Dedicated Screen



Launch-Pad Screen

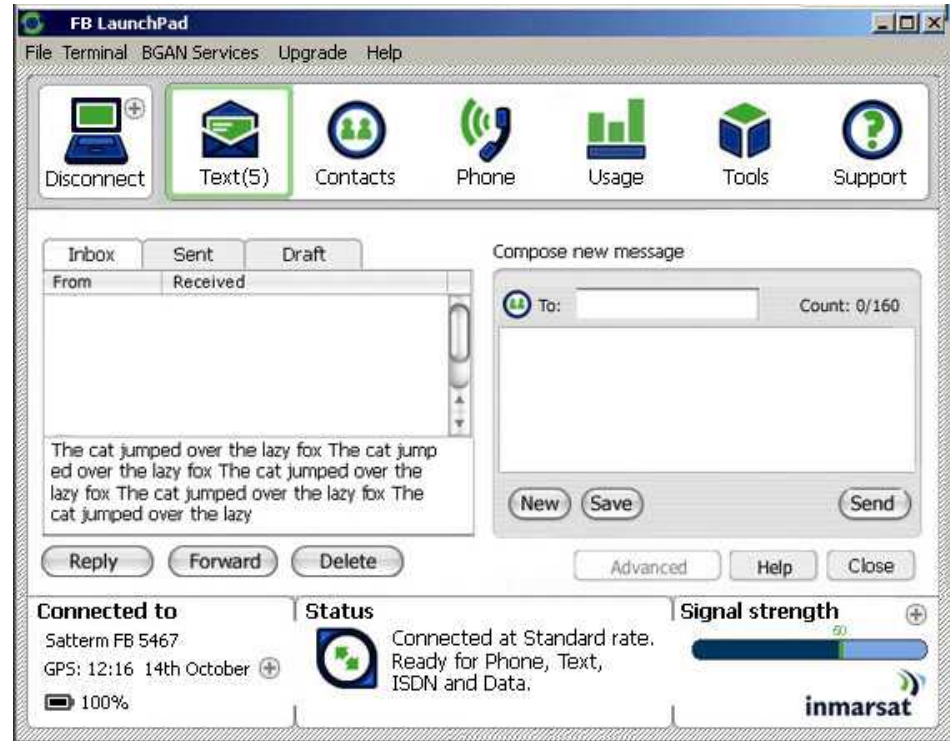
JUE-250 Launch-Pad Screen



FleetBroadband
Main Unit



LAN Cable



PC

JUE-250 Dedicated Screen



Address: <http://192.168.128.100/> Go

- **PROPERTIES**
 - RESTORE
 - **FACTORY DEFAULTS**
- **CONNECTION CONTROL**
 - **WEP SECURITY**
- **ACA**
- **ISDN**
- **OPEN STATUS WINDOW**

PROPERTIES

Current Status

Network Status: Network unavailable
GPS Position: GPS display policy not yet received
Emergency Call Numbers:

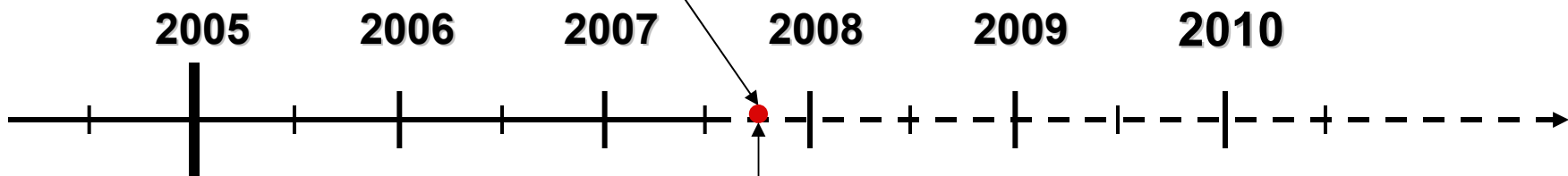
Software Version: 0.0.0.1203
Satellite Modem IMEI: 3517ffff85-00-000879-0
Satellite Modem IMSI: 901112112102003

[View Terminal Log File](#)

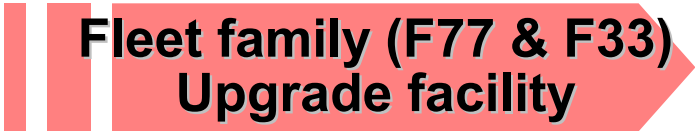
Road Map of FBB Products



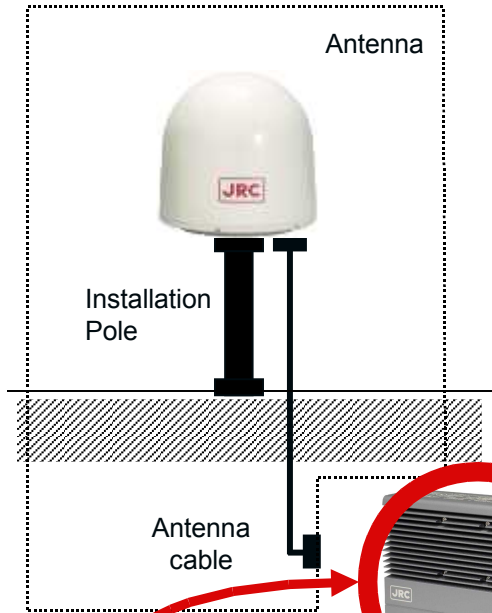
**Inmarsat
FBB official
launch**



JUE-250



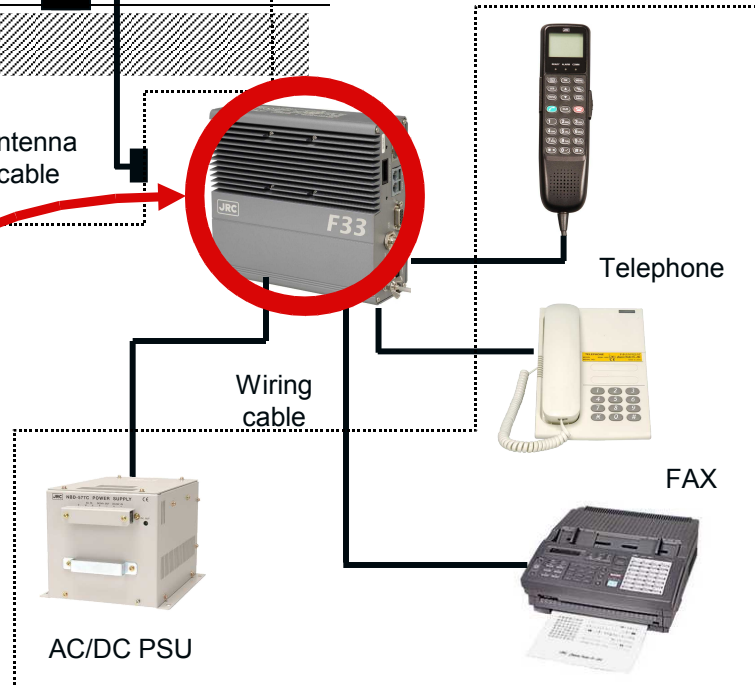
Fleet F33 Upgradeable to FB250



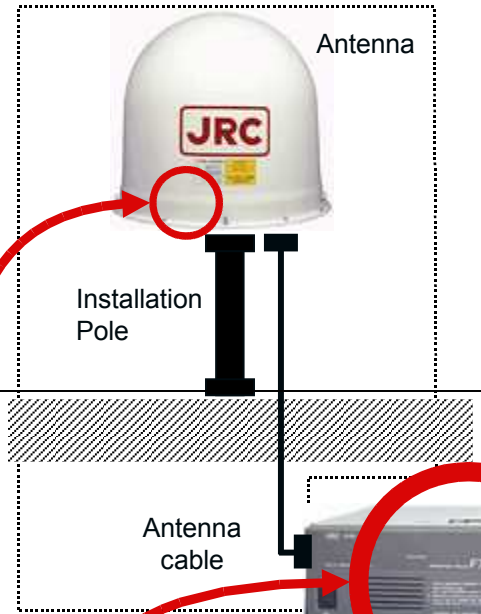
Keep Fleet F33 antenna & all peripheral installations



Replace BDE



Fleet F77 Upgradeable to FB500



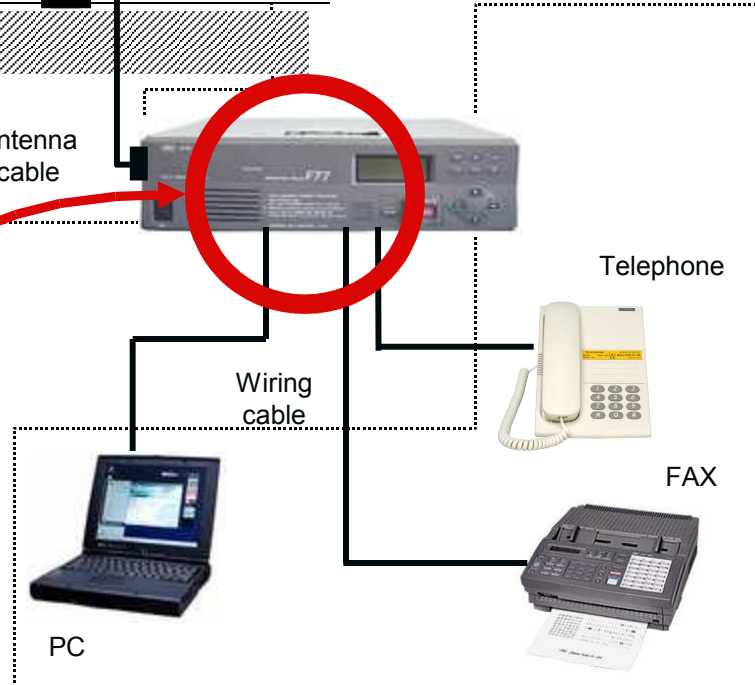
Keep Fleet F77 antenna & all peripheral installations



and RF unit



Replace BDE

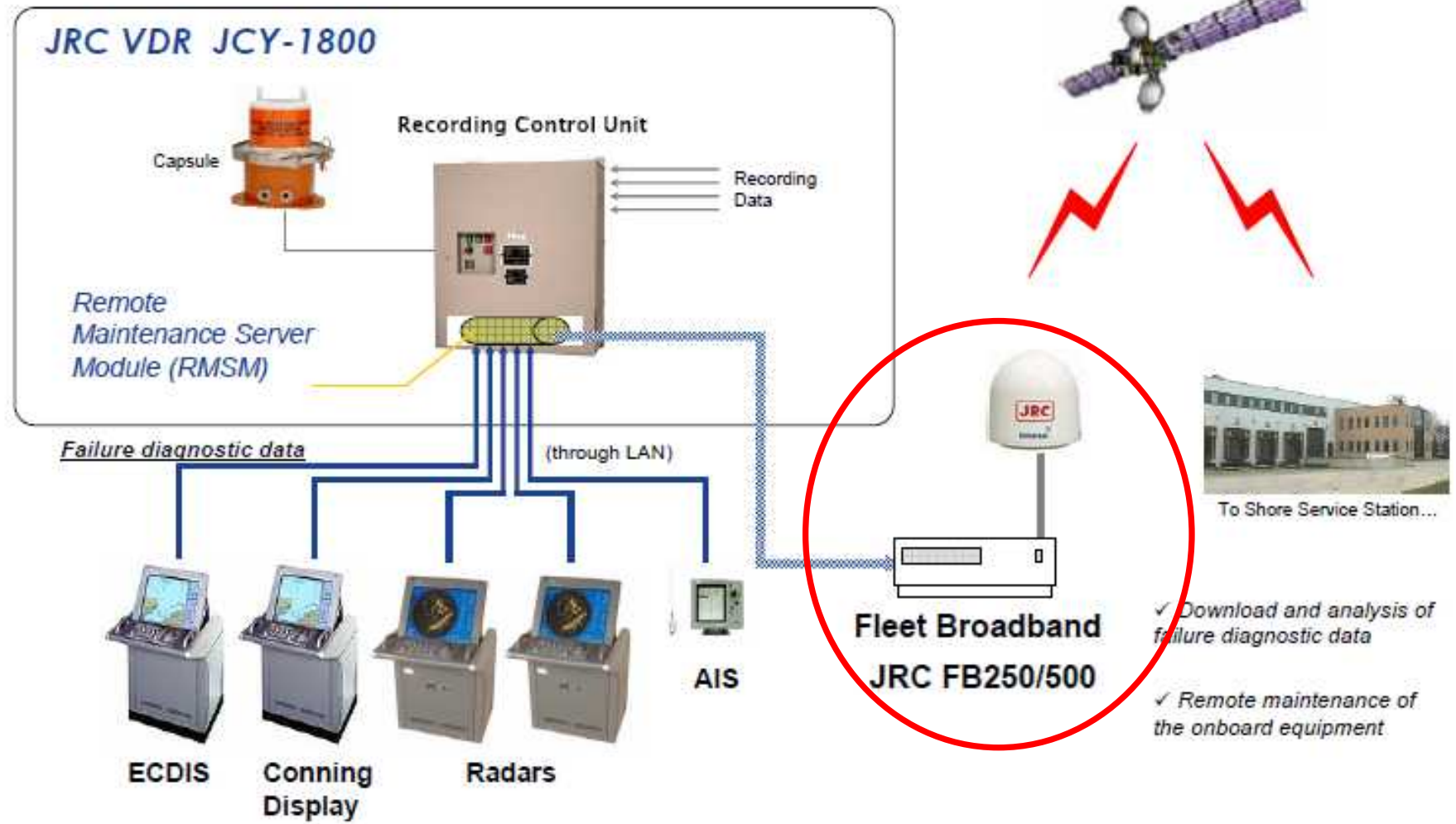


A photograph of a sunset over a body of water. The sun is low on the horizon, creating a bright reflection on the water's surface. In the background, there are silhouettes of buildings and trees. The sky is a mix of orange and grey.

***Global
Service & Support***

The Sun Never Sets.

Integration Online Maintenance



Minimize Down time!

Spare parts Location & 24 hours hotline



One Call™
+81 3 3492 9201

- ✦ 3 branches and 17 service stations
- ✦ FAK: Over 30 models and 280 items, consignment



Meet the JUE-250 on Tour

■ *Where to meet JRC's pioneering JUE-250 at the 2008 public conferences and exhibitions in Europe*



- Digital Ship, Cyprus (Feb)
- SeaJapan, Tokyo (Apr)
- Digital Ship, Oslo (May)
- Fishing Expo, Vigo (May)
- Posidonia 2008, Pireus (Jun)
- Norfishing, Trondheim (Aug)
- SMM, Hamburg (Sept)
- Digital Ship, Singapore (Sept)
- Digital Ship, Athens (Nov)
- Workboat Show, New Orleans (Dec)

JRC Fleet Broadband Hardware Summary



- **Reliability:** Made in Japan, JRC Quality
- **Type approval:** 3 Dec. 2007 by Inmarsat
- **Delivery:** Since Dec. 2007
- **MFE:** In progress
- **Logistics:** Amsterdam based
- **Training:** Amsterdam, Greece
- **FB500** available in 3Q 2008
- **Wide Integration** with Bridge Electronics
- **Unique feature:** Upgrade path™

Please visit at JRC stand

See

Anna Marini

John van Gelder

For

Best price and delivery