

ShipNet A/S

Morten Nordenson  
Fleet Management Consultant



[www.shipnet.no](http://www.shipnet.no)

Even the best can be better

# Utilization of onboard Forms to create statistical Trends & Analysis



- Forms

- A 30% increase of required Forms in 5 years
- Number of required Forms is close to 200
- 20 company specific Forms
- 10 Form specific Details
- A 15 ship Company example
- Submitted Averagely every 3rd month

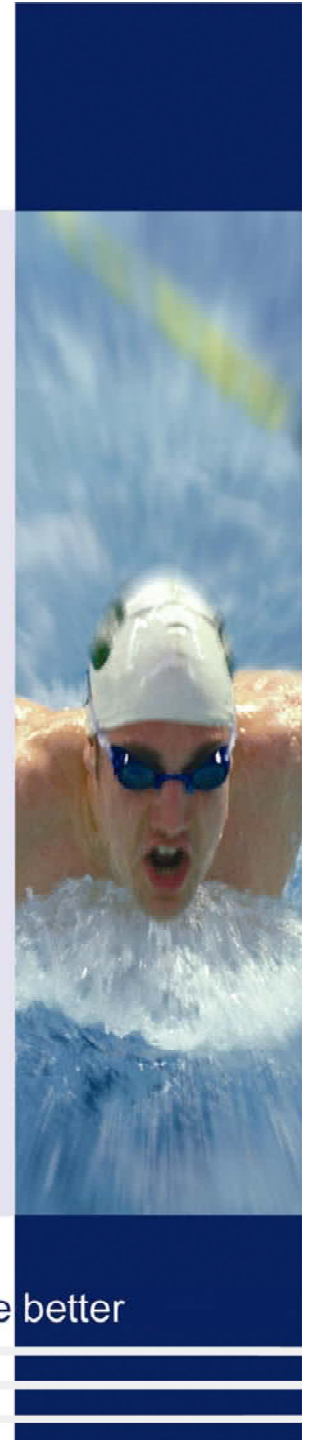
$220 \times 10 = 2200 \times 15 \text{ ships} = 33000 \text{ details every 3 months}$



- Concerns & Cost
- Off the Shelf Microsoft Technology
- Typical Form update 5 kB e-mail
- Typical Form data replication >1 kB
- Data Warehousing
- Centralized Configuration Tools & Support
- Rapid Adaptability



- Maintaining Own Forms Database
- Budgeting Based on
  - Analysis
  - Trends
  - Predictions
- Gathering information to learn from



# Highlights & Benefits

- Data Warehousing & Storing Capacity
- Availability of Historical Data
- Centralized Storing for Comparison
- Forms Scheduler
- Remote Configuration & Support
- Reduce paper use in Electronic Archiving
- Reduce paper using more Comprehensive Electronic Reports

