



# *Datatrac Technologies and Programs*



*Datatrak is a systems integration  
company with a focus on*

*Automatic Data Capture*

*We collect data without typing or using paper*

# Data Management System

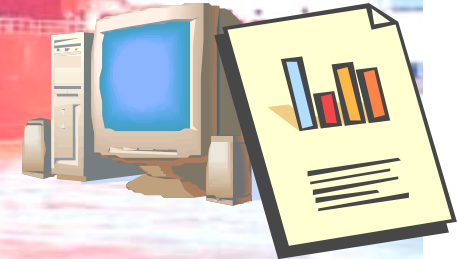


*Data Collection*



*Data Storage*

*Data Presentation*



Stena Voyager Navigation Log & Voyage Report Date: / /  Stranraer to Belfast

Master	Navigator	Stranraer	HW
Time on duty	Chief Engineer	Liverpool	HW
	Look-out	Belfast	HW*

**Cargo**

Cars	
Caravans/Tris	
M/Cycles	
Coachas	
Artics	
Rigidis	
Baggage	
Livestock	
Freight weight	
Total Cargo wt.	

**WT Doors**

Sched Departure	
Open/Arr	
Close/Dep	

**Check Lists**

Arrival	
Departure	
Gyro	
Error	

**Position**

Position	Time	Distance	Course	Speed
No. 1 Br				
Cairn Lt Ho				
Millereu By				
Corsewall Lt				
Cloughan Jetty				
Fairway By				

**Time Berth/Berth**

**Time on Passage**

**Passage Speed**

**Time in Port**

**Delays**

Actual Departure	
Delay Departure	
Arrival	
Del	

**Sea/Swell**

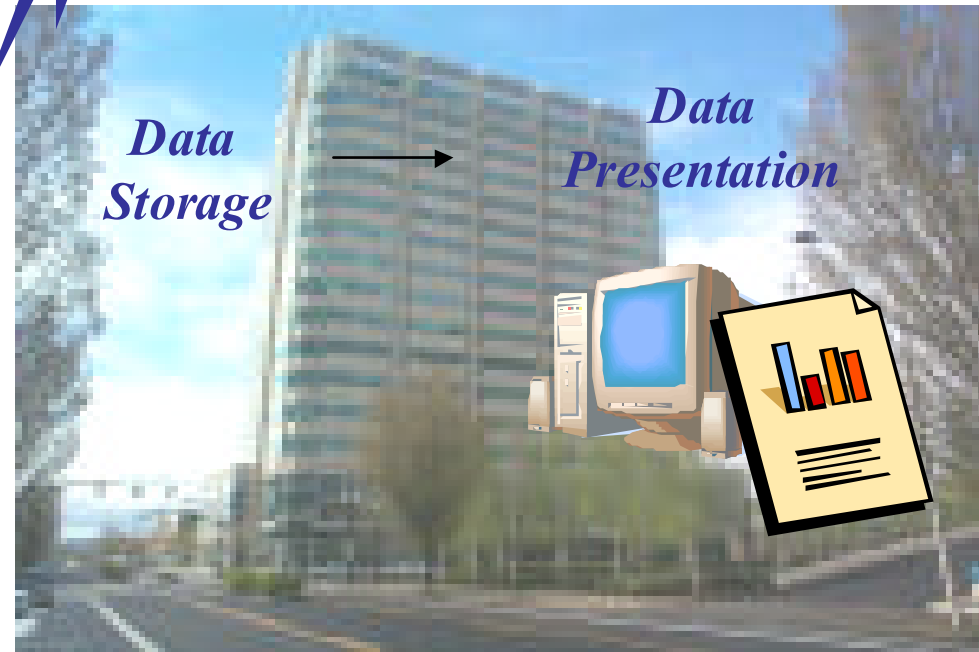
**Sat/Drift**

**Weather/Visibility**

**Fuel Used (litres)**

Master:

Navigator:



*Data Storage*

*Data Presentation*



# Our Technologies

## Contact Memory Tags



## Digital Pens & Paper

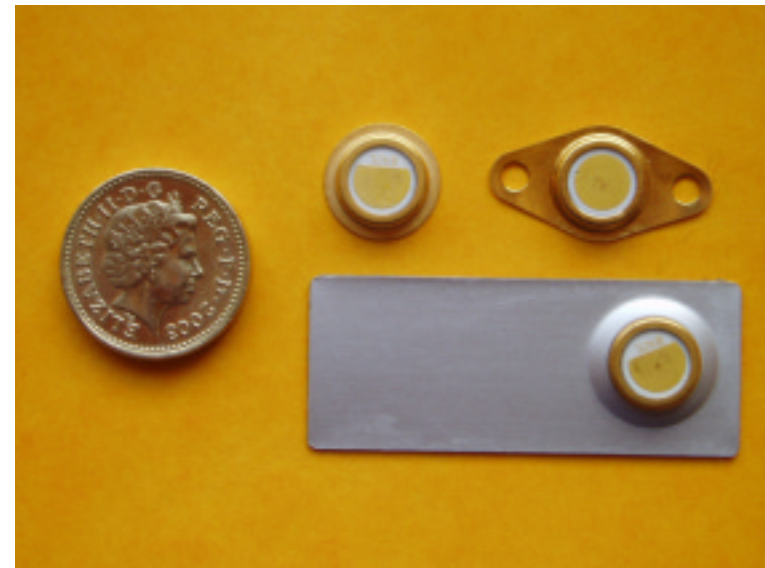


# Applications

**Assetrac using E-tags**

**Infotrac using E-pens**

# Assetrac



Administration Administration

File Help

## Routes

Rounds	Locations	Members
All Points Route	-1	Shaft Gear Box 1
Flat 1	Air Drier System-1	Shaft Gear Box 2
(new route)	Air Drier System-2	M.E. Lube Oil 1
Save Round	Air Drier System-3	M.E. Lube Oil 2
Delete Round	Auxy No1/1	M.E. LD Auto Fill 1
	Auxy No1/10	M.E. LD Auto Fill 2
	Auxy No1/2	Reefer S.W. Pump No1 1
	Auxy No1/3	Reefer S.W. Pump No1 2
	Auxy No1/4	Reefer S.W. Pump No2 1
	Auxy No1/5	Reefer S.W. Pump No2 2

Update Operators Update Locations Update Routes Ship Data Close

start | Inbox - Microsoft O... | Infotrac | Infotrac | Administration | Document1 - Micros... | 12:20

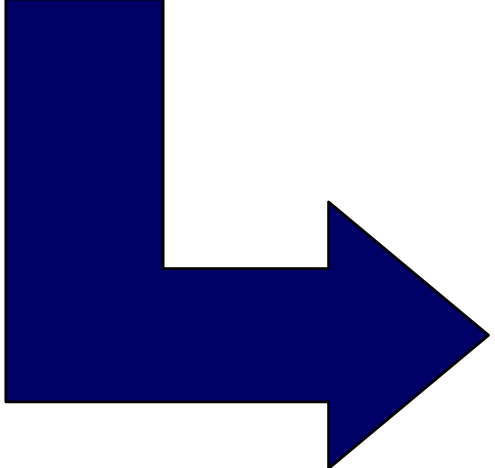
# Infotrac

*Data input*



*Data transfer*





Start **Stena Voyager Navigation Log & Voyage Report** Date:           **Stranraer to Belfast**

Master		Navigator		Stranraer	HW		LW	
Time on duty		Chief Engineer		Liverpool	HW		LW	
		Lookout		Belfast	HW		LW	

<b>Cargo</b>				
Cars				
Caravans/Tris				
M/Cycles				
Coachas				
Artics				
Rigids				
Baggage				
Livestod:				
Freight weight				
Total Cargo wt.	<input type="text"/>	<input type="text"/>	<input type="text"/>	<input type="text"/>

<b>WT Doors</b>	
Open/Arr	
Close/Dep	
<b>Check Lists</b>	
Arrival	
Departure	
<b>Gyro</b>	
Error	

Sched Departure	<input type="text"/>	<input type="text"/>	<input type="text"/>	<input type="text"/>
Actual Departure	<input type="text"/>	<input type="text"/>	<input type="text"/>	<input type="text"/>
Delay Departure	<input type="text"/>	<input type="text"/>		
Arrival Berth	<input type="text"/>	<input type="text"/>	<input type="text"/>	<input type="text"/>
Delay on Passage	<input type="text"/>	<input type="text"/>		
Draught Fwd	<input type="text"/>	<input type="text"/>	<input type="text"/>	<input type="text"/>
Draught Aft	<input type="text"/>	<input type="text"/>	<input type="text"/>	<input type="text"/>
Propulsion	<input type="text"/>	<input type="text"/>	<input type="text"/>	<input type="text"/>
Ballast Waight	<input type="text"/>	<input type="text"/>	<input type="text"/>	<input type="text"/>

Passenger Number	<input type="text"/>	<input type="text"/>	<input type="text"/>	<input type="text"/>
Crew Number	<input type="text"/>	<input type="text"/>		
PC Mode	<input type="text"/>	<input type="text"/>	<input type="text"/>	<input type="text"/>
Special Needs	<input type="text"/>	<input type="text"/>	<input type="text"/>	<input type="text"/>
Wind Spd/Diraction	<input type="text"/>	<input type="text"/>	<input type="text"/>	<input type="text"/>
Sea/Swell	<input type="text"/>	<input type="text"/>	<input type="text"/>	<input type="text"/>
Set/Drift	<input type="text"/>	<input type="text"/>	<input type="text"/>	<input type="text"/>
Weather/visibility	<input type="text"/>	<input type="text"/>	<input type="text"/>	<input type="text"/>
Fuel Used (litres)	<input type="text"/>	<input type="text"/>	<input type="text"/>	<input type="text"/>

Master	<input type="text"/>
Navigator	<input type="text"/>

Time Berth-Berth	<input type="text"/>	<input type="text"/>	<input type="text"/>
Time on Passage	<input type="text"/>	<input type="text"/>	<input type="text"/>
Passage Speed	<input type="text"/>	<input type="text"/>	<input type="text"/>
Time in Port	<input type="text"/>	<input type="text"/>	<input type="text"/>

<b>Position</b>	<b>Time</b>	<b>Distance</b>	<b>Course</b>	<b>Speed</b>
No.1 Bn				
Cairn Lt Ho				
<b>Milleur By</b>				
Corsewall Lt				
<b>Cloghan Jetty</b>				
Fairway By				

Remarks	

Send

# **Data and Document Management System**

- **Data is collected from whatever source in the Data Management System**
- **Here it can be filed, stored and retrieved**
- **Data from anywhere in DMS can be retrieved for analysis**



# Data Management

- [Search](#)
- [Standard Reports](#)
- [Help](#)

Start Date			End Date		
25	June	2004	25	June	2004

## Ships

-  Stena Voyager
-  Stena Caledonia
-  Stena Europe
-  Stena Explorer
-  Stena Lynx III
-  Stena Scanrail

## Documents

-  Voyage Logs
-  Check List
-  Security Reports
-  Port Visits
-  Maintenance Reports
-  Cargo Report



# Data Management

[Search](#)

## Voyage Log

[Standard Reports](#)

From 2004-06-25 to 2004-06-25

[Help](#)

	Created by		
	Ship Name		
		Stena Voyager	
			2004-06-25 10:03:51
			2004-06-25 10:05:32
	Voyage ID		
	Document Subtype		
	Start Date of Report		
	End Date of Report		
2 Documents			
	Select All Documents		

Microsoft Excel - Book2

File Edit View Insert Format Tools Data Window Help

Arial 10 B I U

	A	B	C	D	E	F	G	H	I
1									
2									
3									
4		<b>Inlet</b>	<b>L.O.</b>	<b>Inlet</b>	<b>Inlet</b>	<b>S.W.</b>	<b>Pump</b>	<b>#1 SW</b>	
5		<b>Pressure</b>	<b>Outlet</b>	<b>Pressure</b>	<b>Temp</b>	<b>Temp</b>	<b>Discharge</b>	<b>Outlet</b>	
6									
7	0000-0400	12.2	12.2	14	10	10	45.6	0	
8	0400-0800	12.2	12.2	14	11	11	45.6	1	
9	0800-1200	12.2	12.2	14	12	12	48.7	1	
10	1200-1600	12.1	12.1	14	11	11	45.2	0	
11	1600-2000	12.2	12.2	14	10	10	42.9	0	
12	2000-2400	12.1	12.1	14	10	10	39.8	1	
13									
14									
15									
16									

Sheet1 / Sheet2 / Sheet3

Ready Sum=628.8 NUM

# Summary

- **This technology :**
  - **Eliminates typing**
  - **Saves time**
  - **Eliminates Paper document storage**
  - **Improves accuracy**
  - **Supports Sea Staff by easing the data capture processes**

# Finally

*You can try this without disrupting your systems*

*It is extendible – you can buy it in small steps*

*It is the future.*

*and it is very cost effective.*