

About Maersk Tankers

Maersk Tankers owns and operates a large fleet of product tankers – all built and operated in accordance with the highest standards for quality and reliability. The first dedicated tanker was acquired in 1928, and ever since, the fleet has been expanding and improving to meet changing customer needs. Today, the Maersk Tankers fleet is one of the largest product tanker fleets in the world.

Infinity & Maersk Tankers

October 13th 2015, Digital Shipping - Singapore, Ken Gregers Larsen

Use case on Infinity implementation

- The project
- Implemented Infinity features
- Benefits



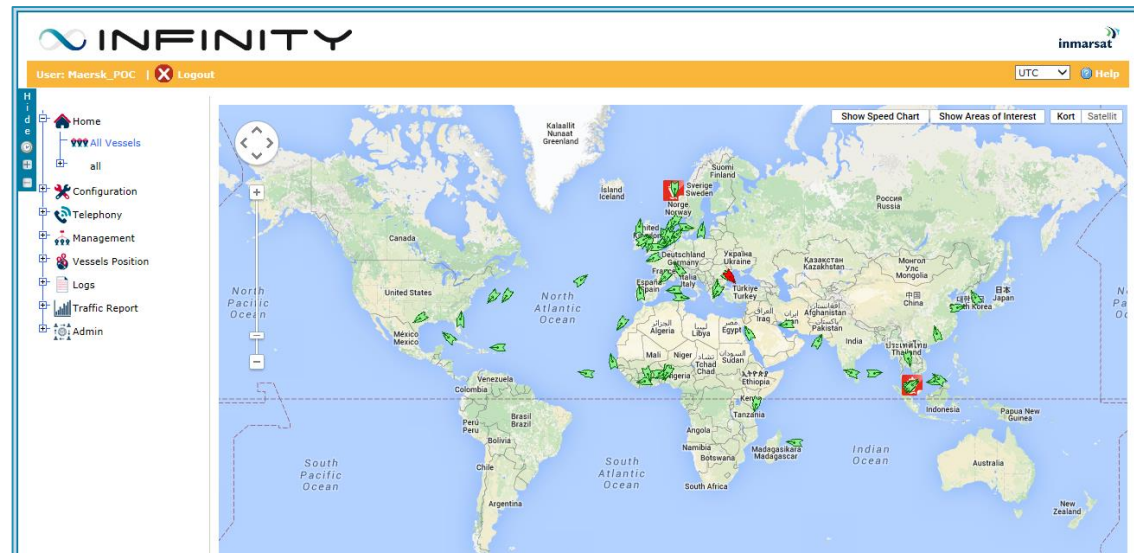
The Project

- Full tanker fleet receives fully automatic communication platform based on two satellite systems and automatic fail-over
- All vessels also receives:
 - Business PBX with multiple phones and direct phone numbers
 - Multiple crew call locations
 - Full wifi coverage of all accommodation decks
 - Higher similarity between shore and vessel internet access
- Full standardization of satellite communication, Internet access and telephony services fleet-wide



Implemented Infinity Features

- Data exchange vessel <-> shore
- Telephony
- Crew LAN
- Automatic account creation
- Folder replication
- Supplier LAN
- Vessel voyage data



Implemented Infinity Features

- Data exchange between vessel <-> shore applications based
 - Vessel **maintenance & management** data
 - Vessel **stores ordering** data
 - **Crew management** data
- So-called:
 - *file 2 mail* (*pack and send*)
 - *mail 2 file* (*receive and unpack*)

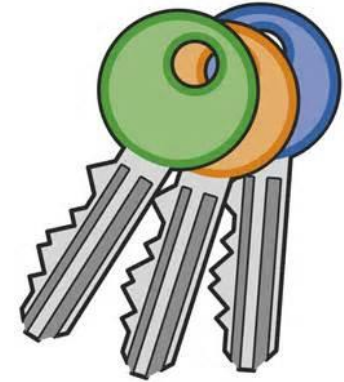


Implemented Infinity Features

- Telephony
 - Global **Address Book** replication
 - **Low cost crew calls** using pin codes



Implemented Infinity Features



- Crew LAN
 - Individual **Crew accounts** for internet access
 - Individual **Guest accounts** for internet access
 - **Superintendent accounts** for internet access
 - **Managed data consumption** through a daily allowance per crew member
- Content Filtering
 - **Category** filters
 - **White / Black** lists
 - Easy **fleet wide rules** management

Implemented Infinity Features



- Automatic Crew account creation
 - Integration ensuring automatic **crew account** creation/deletion
 - Integration ensuring automatic **guest account** creation/deletion

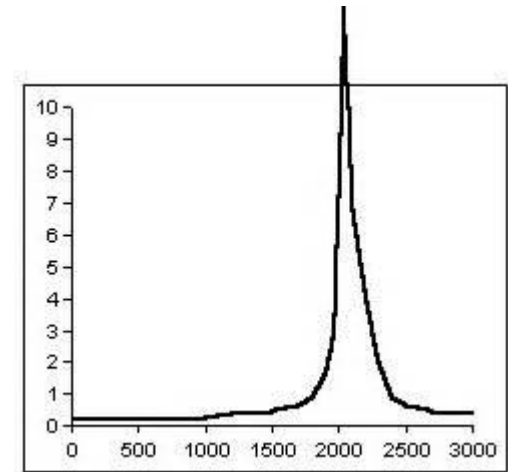
Implemented Infinity Features

- Folder replication
 - Application **rollout**
 - Software **updates**
 - Information sharing through **documentation libraries**
 - **Master only** – folder replication
 - **Service only** – folder replication



Implemented Infinity Features

- Supplier LAN
 - **Access from shore** to vessel
 - Service & maintenance
 - Performance surveillance
 - Access from **vessel appliances** to shore
 - On-board devices delivering data to shore based data collection
 - Access from **vessel applications** to web based services
 - Chart updates
 - Government services and reporting



Implemented Infinity Features

- Vessel voyage data
 - Reporting of vessel **position, velocity and heading** ever 10th minute



Benefits

- Operations
 - Stable and reliable bi-directional application data exchange
- Vessel Management
 - Easy access to vessel data & Systems
- Vessel IT Support
 - Easier vessel IT maintenance
 - Centralized management
- Crew
 - Cheap private calls
 - Extensive and free internet access



Questions..?

You can reach me here:

Mail: kgl@combado.dk
ken.larsen@maersktankers.com

Phone: +45 2825 2625

LinkedIn: Search "Ken Gregers Larsen"

