

Integrate – Collect - Collaborate

How Team Tankers activates data and increases productivity

V/ Flemming Weel
Consultant for Viteco, owner of InfoVenture





BACKGROUND

Setting the scene

Company Profile

Key facts

Leading chemical tanker company

Headquartered in Westport, US

~86 onshore employees in 7 offices world-wide

Sailing fleet of 45 vessels

~2,500 port calls per year

Customer base

ExxonMobil



wilmar



MITSUI



NESTE OIL

bp

TRICON ENERGY



Vessel Type
Chemical MR (IMO II, 17/22 tanks) ²⁾

Dwt / Tank
~45,000 Dwt Coated

Primary Products
EDC, BTX, MEG, Caustic soda, Veg. oil



Vessel Type
Deep Sea (coated)

Dwt / Tank
~25,000 Dwt Coated

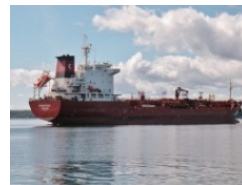
Primary Products
CPP, BTX, Veg. oil, Biofuels



Vessel Type
Deep Sea (stainless)

Dwt / Tank
~20,000 Dwt Stainless steel

Primary Products
MEG, Phosphoric acid, Sulphuric acid, Biofuels



Vessel Type
City Class

Dwt / Tank
~13,000 Dwt Coated

Primary Products
CPP, DPP, BTX, Caustic soda, Veg. oil

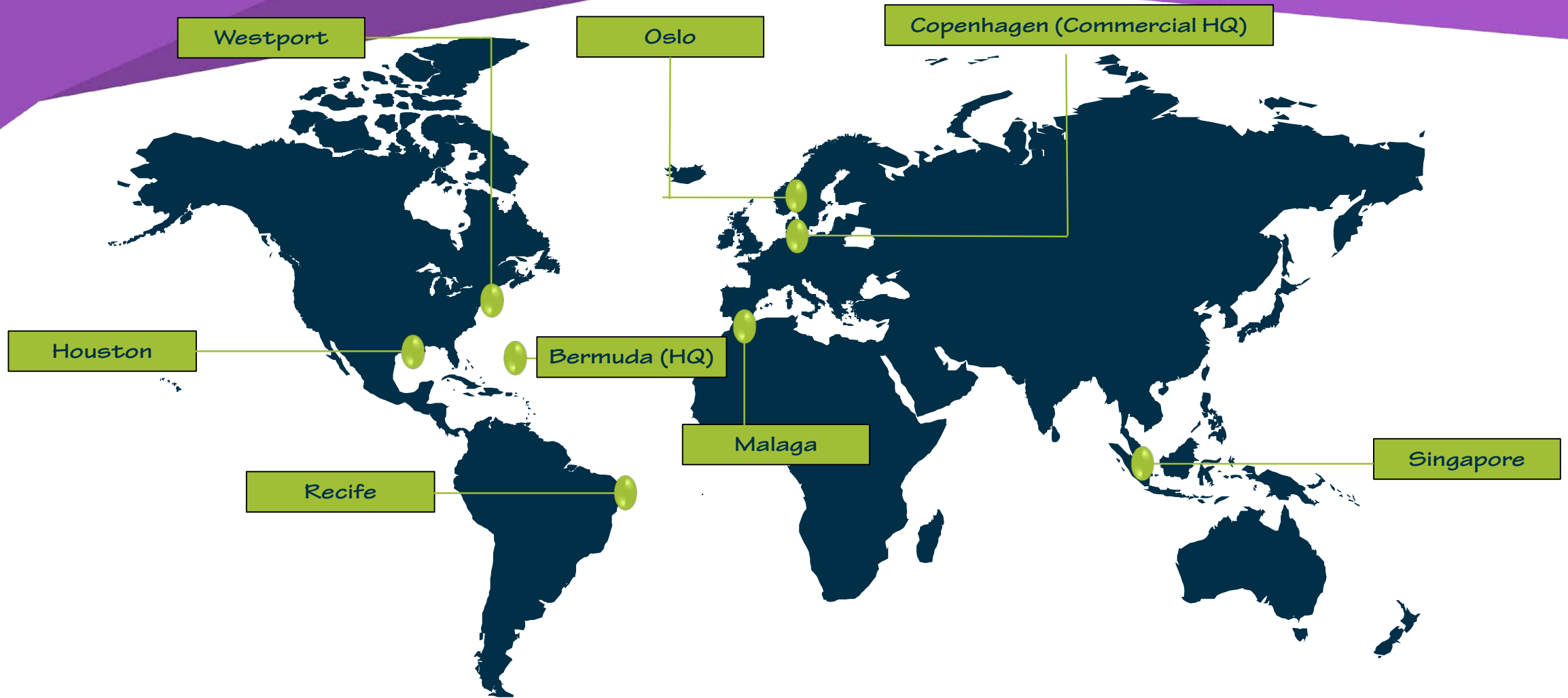


Vessel Type
Regional

Dwt / Tank
3,000 – 12,000 Dwt Stainless steel

Primary Products
Phosphoric acid, Sulphuric acid, Biofuels, Phenol and other specialty chemicals

Commercial platform





What **TEAM** has accomplished
and what the benefit is

Two projects – one platform

DELPHI project

- From hindsight to Insight -

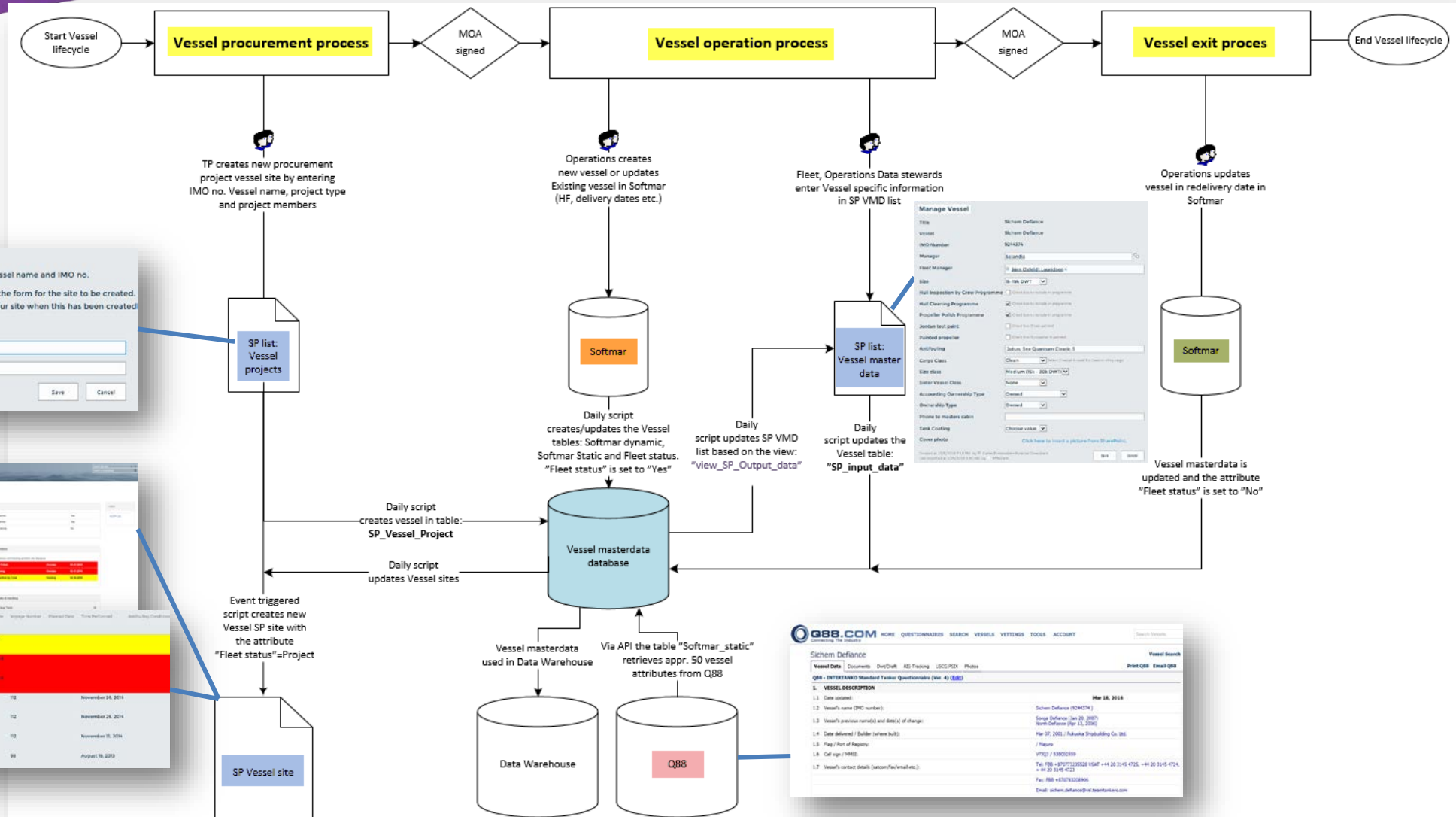
TEAM  NET

Why TEAM initiated TEAMNET and Delphi

- Stability and speed of IT
- "Corporate" and "social" communication
- Knowledge sharing
- Information- and document management
- IT system support of business processes
- Automation of business processes
- Information available for decision making

Vessel lifecycle process

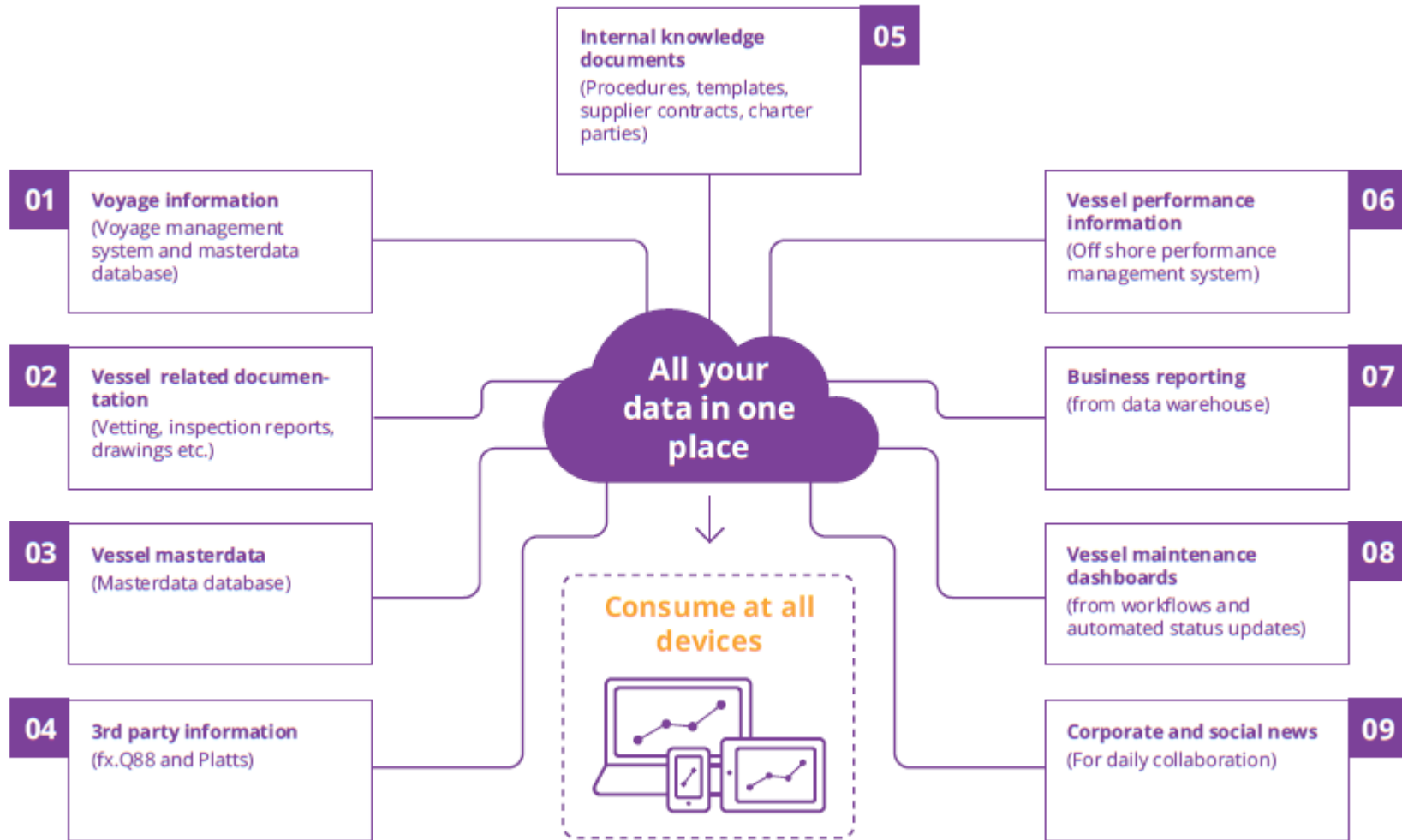
Example of knowledge injected workflow



Online demo

TEAM  NET

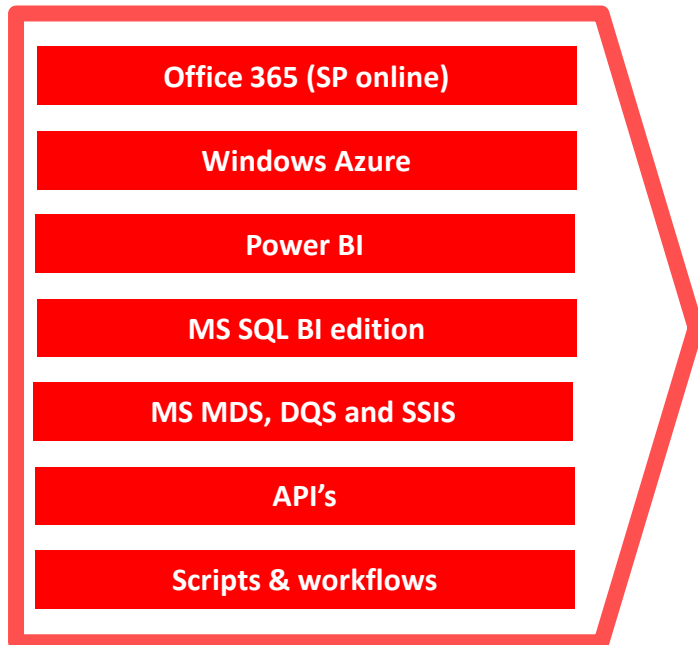
Project output



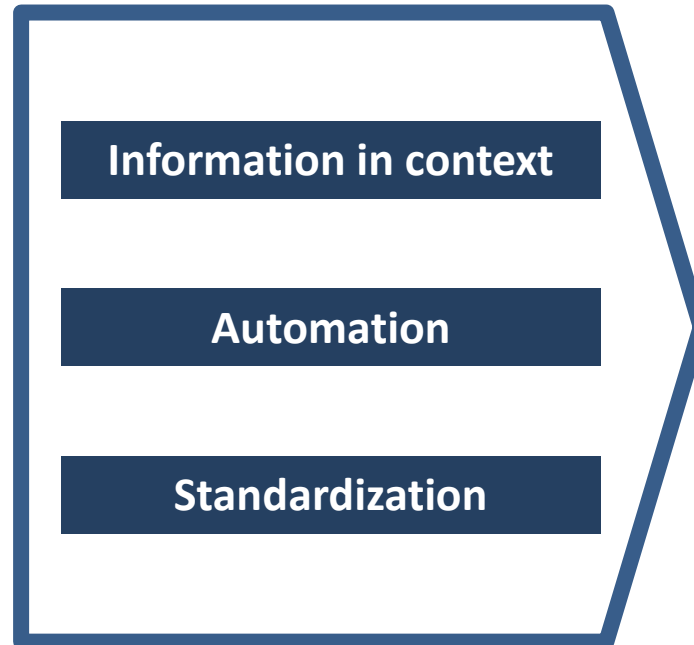
From technology to business value

- with knowledge injected workflows

Technology



Output



Benefit



Thank you for listening